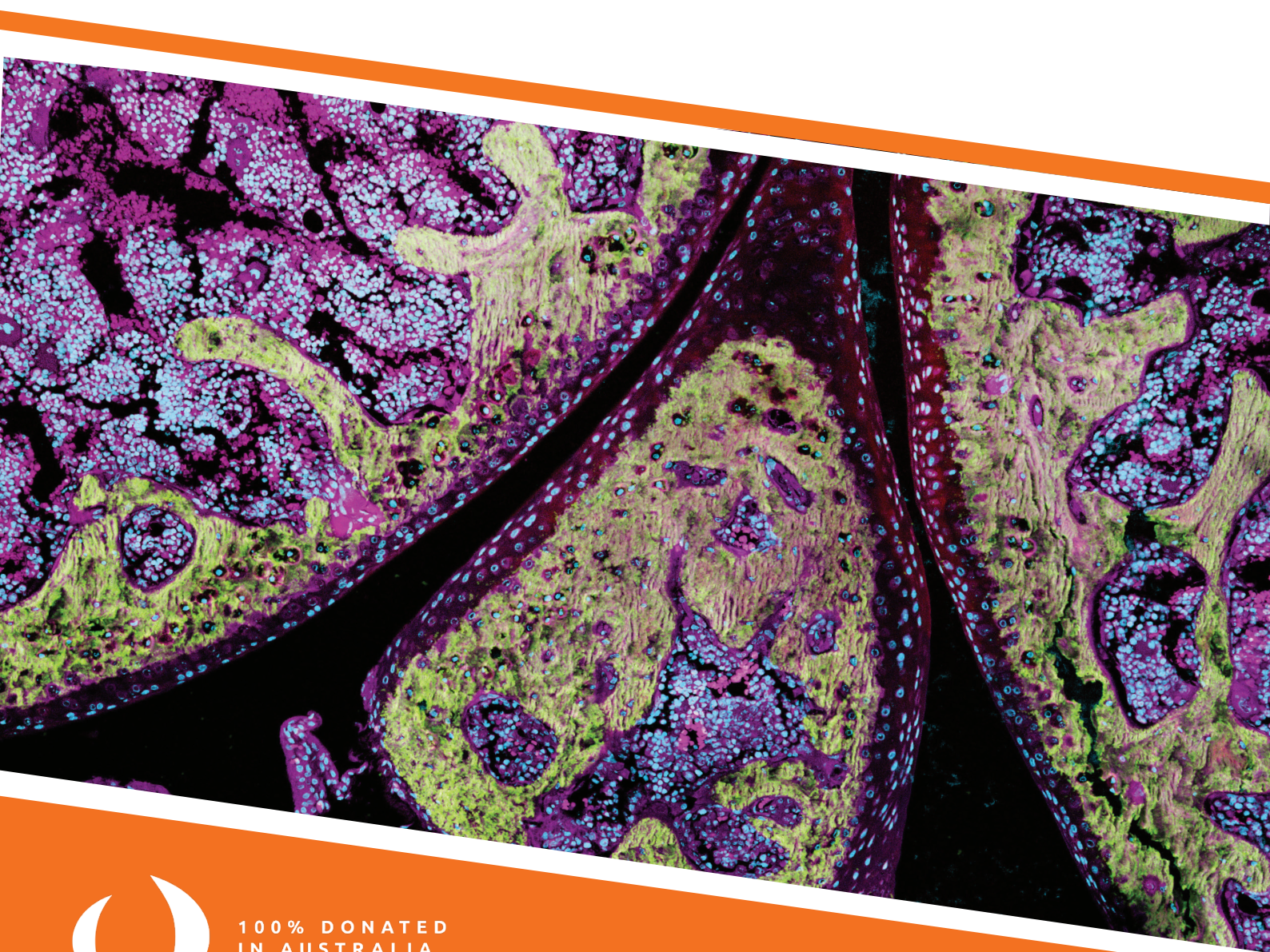


Enhancing Lives  
Because of You



PERTH BONE &  
TISSUE BANK INC.

# Allograft Catalogue



100% DONATED  
IN AUSTRALIA

September 2020

## 1. About

- Donor awareness
- Donor sourcing & screening
- Allograft processing
- Supply
- Cost
- For Medical Professionals
- Research & Development

## 2. PlusLife Allografts

- Milled bone
- Tailored Allograft
- Conventional Allograft

PlusLife wishes to extend our sincere gratitude for the musculoskeletal confocal microscope images displayed in this catalogue which were kindly donated by  
**Dr Junjie Gao and Professor Minghao Zheng**  
from University of Western Australia.





**PlusLife (Perth Bone & Tissue Bank) is a not-for-profit organisation and is recognised as one of Australia's premier musculoskeletal tissue banks.**

As a Therapeutic Goods Administration licenced tissue bank, we are committed to providing medical professionals with safe and effective human bone and tissue allografts for various surgical specialties.

We pride ourselves on exclusively retrieving bone & tissue **100% donated in Australia**, from which allografts of the highest quality are **processed in our facility located in the Perth suburb of Midland in Western Australia.**

**PlusLife is able to provide life enhancing allografts through the gift of bone & tissue donation.**



# About

## DONOR AWARENESS

Education programs are regularly undertaken to raise community awareness of PlusLife's living (Femoral Head) & deceased (Cadaveric) donor programs by engaging with other not for profit and charitable organisations.

## DONOR SOURCING & SCREENING

PlusLife adheres to strict exclusion criteria and regulatory controls mandated by the Therapeutic Goods Administration for screening and testing, thus minimising the risk of the transmission of disease, and ensuring the safety of recipients.

All donors are tested for a range of infectious diseases including Hepatitis B & C, HIV (AIDS) and Syphilis. Microbiology and histopathology examination testing is also conducted on donor samples.

## ALLOGRAFT PROCESSING

Constant monitoring of our C grade cleanroom environment and sampling of tissue throughout processing enables us to provide assurance that the tissue we produce is of a high standard.

All processed bone allograft is terminally irradiated (25kGy) prior to distribution.

**At PlusLife, each allograft is produced from a single donor to ensure complete traceability. We do not practice donor pooling.**

## SUPPLY

The allograft range in this catalogue is subject to availability and may change in manufacturing specification at any time.





## COST

There is no cost associated with donating bone and tissue, nor is any payment made to the donor or donor family.

Allograft fees are charged directly to the hospital, and are fully recoverable through the private health funds or covered by Medicare if the surgery is completed in a public hospital.

Fees for the supply of allografts incorporate the many associated costs such as lab charges, consumables used in the retrieval and processing of the allograft, regulatory and quality system costs and administration costs.

Freight for local (WA) allograft is included in the fully rebatable allograft fees, however consignments sent outside WA may attract an air freight and handling charge which is payable by the hospital and is not currently recoverable.

## FOR MEDICAL PROFESSIONALS

PlusLife has a wide range of musculoskeletal tissue allografts available.

We can provide high resolution photographs of most allografts (taken at processing) along with accurate measurements to ensure the allograft meets your needs. Please note that these photos are taken prior to irradiation.

Annotated X- rays are also available to be sent electronically.

**Our Technicians are available 24/7 to assist Medical Professionals and hospital staff with questions regarding ordering and distribution of our allograft.**

**Order forms available on our website:**

**[www.pluslife.org.au](http://www.pluslife.org.au)**

**Please send order forms directly to:**

**Email: [orders@pluslife.org.au](mailto:orders@pluslife.org.au)**

**Fax: 08 6144 4259**

**Phone: 08 6144 3500  
(Business & after hours)**

**Postal: PO Box 5042 Midland**

## RESEARCH & DEVELOPMENT

Our new Midland facility will enable us to collaborate with clinicians & researchers in developing more highly advanced allograft which meet and exceed clinical expectations; therefore we welcome clinical input and the opportunity to discuss research & development collaborations.

# PlusLife Allografts

## 100% Donated in Australia. Processed in Australia

- Each Allograft produced from a single donor to ensure complete traceability
  - Fully recoverable by health funds/Medicare
  - Terminally irradiated
  - Low dose irradiated tendons (15kGy)
  - Screened and processed in accordance with Therapeutic goods Administration regulations
- ✓ **ARTG ID 229915**

### NEURO & SPINE

- Milled bone  
Coarse (8-10mm)  
Fine (5-8mm)
- Pellet
- Block
- Ring

### ORTHOPAEDIC & SPORTS MEDICINE

- Dowel
- Osteotomy/  
Tricortial Wedge
- Plug
- Strut
- Low-dose  
Irradiated Tendons  
(15kGy)

### ORAL MAXILLOFACIAL & DENTAL

- Milled bone  
Ultra fine (0.5-1mm)  
Super fine (1-3mm)
- Cortical Segment

### CONVENTIONAL ALLOGRAFT

- Long Bone
- Condyle
- Femoral Head
- Hemi-Pelvis





## MILLED BONE

- Composed of cortico-cancellous bone which enables natural resorption while providing a scaffold for bony ingrowth
- Osteoconductive
- Available in a wide range of particle size distribution and package size

MILLED BONE – shaded units are unavailable					
Particle Size	Unit Weight/Volume (volume is for the given weight)				
	<5g ~ <10cc	5-9g 10-20cc	10-19g ~ 21-39cc	20-29g ~ 40-58cc	30-50g ~60-100cc
Coarse (8 - 10mm)					
Fine (5 - 8mm)					
Ultra Fine (0.5 - 1mm)					

ITEM	REBATE CODE	DESCRIPTION
Milled <5 grams (<10cc equivalent)	PBT62	Bone filling material consisting of both compact and spongy bone that has been fragmented to varying sizes through milling action; May be coarse, fine, super fine or ultra-fine milled; predominantly cancellous and free of cartilage. Packaged by net weight (gr) as indicated on packaging.
Milled 5-9 grams (10-20cc equivalent)	PBT63	
Milled 10-19 grams (20-38cc equivalent)	PBT64	
Milled 20-29 grams (40-58cc equivalent)	PBT08	
Milled 30-50 grams (60-100cc equivalent)	PBT09	
Milled >50 grams (>100cc equivalent)	PBT10	



Milled Bone (Coarse/Fine/Ultra Fine/Super Fine) Cortico-cancellous



PBT17 Distal Femur



PBT20 Proximal Femur (head removed)



PBT22 Whole Femoral Head

ITEM	REBATE CODE	DESCRIPTION
<b>Femur whole</b>	PBT18	Entire femur left or right, with or without femoral head. If femoral head removed, transected at femoral neck.
<b>Femur – Distal</b>	PBT17	Distal portion of femur, transected through the shaft, incorporating both femoral condyles.
<b>Femur – Proximal with femoral head</b>	PBT65	Proximal portion of the femur, transected through the shaft, with the femoral head. <b>(Subject to availability)</b>
<b>Femur – Proximal without femoral head</b>	PBT20	Proximal portion of the femur, transected through the shaft, without the femoral head.
<b>Femoral Head –Whole</b>	PBT22	Head of the femur, removed from proximal femur - transected at the femoral neck; supplied as whole or half.

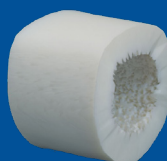
ITEM	REBATE CODE	DESCRIPTION
<b>Femoral Condyle</b>	PBT21	(Lateral/Medial) lower extremity of the (left/right) femur inclusive of cartilaginous surfaces transected with approximately ¼ of the length of the shaft intact.
<b>Femoral Ring</b>	PBT24	A cylinder of cortical bone, enclosing a cylinder of cancellous bone, cut from the shaft of the femur - depth in mm indicated on the packaging.
<b>Femur / Tibia shaft middle third</b>	PBT19	The mid-portion of the femur or tibia removed by transecting the femur just below the diaphysis of the femur.



PBT21 Femoral Condyle  
(split – lateral/medial)



PBT19 Shaft (Femoral/Tibial)



PBT24 Femoral Ring





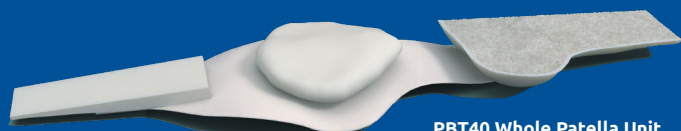
**PBT46 Tendons** (Tibialis, Hamstring, EDL etc.)



**Achilles Tendon PBT01** With b/block **PBT61** Without b/block

ITEM	REBATE CODE	DESCRIPTION
<b>ACL unit</b>	PBT02	Anterior Cruciate Ligament Unit - Patella & tendon with bone block that have been split.
<b>Achilles Tendon</b>	PBT01	Achilles tendon attached to the bone block from the (left/right) calcaneus: at least 15cm in length, including bone block.
<b>Achilles Tendon - Without bone block</b>	PBT61	Achilles tendon without section of calcaneal bone block. <b>(Subject to availability)</b>
<b>Tendons</b>	PBT46	Tendon (or ligament) without bone attachment; examples are FDL, EHL, Semitendinosus, Gracillus, Tibialis Anterior and Posterior.

ITEM	REBATE CODE	DESCRIPTION
<b>Tibia – proximal with Patella</b>	PBT44	Proximal Tibia with patella and tendon attached.
<b>Tibia – Proximal without patella</b>	PBT45	Proximal tibia including tibial plateau, without patella and tendon. <b>(Subject to availability)</b>
<b>Patella unit whole with or without Tibial block</b>	PBT40	Patella & tendon left whole with bone block.
<b>Fibula</b>	PBT25	May be removed in entirety including the head which articulates with the tibia, and the distal end (lateral malleolus).
<b>Fibula segment (proximal/distal)</b>	PBT28	Proximal or distal segment of the fibula.



**PBT40 Whole Patella Unit**



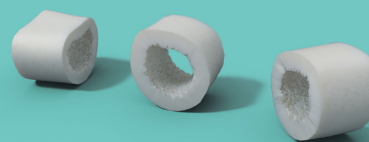
**PBT44 Proximal Tibia & Patella**



**Pelvis**  
PBT30 Hemipelvis Complete  
PBT29 Acetabulum



**Strut (Femoral/Tibial)**  
PBT06 10-15cm  
PBT07 >15-19cm  
PBT48 >20cm

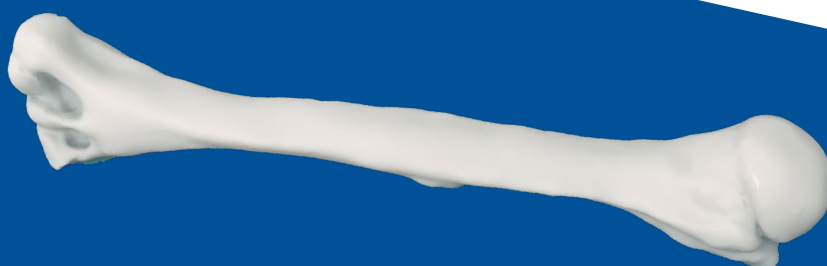


PBT03 Fibular Ring

ITEM	REBATE CODE	DESCRIPTION
<b>Bone Plug, Block, Ring</b>	PBT03	Small bone segments cut into block or ring shapes of various lengths and widths. May be cancellous or cortical or cortico-cancellous. Blocks are produced from femoral heads, patella, tibial or femoral metaphysis, tibial or femoral epiphysis; Rings are produced from fibula.
<b>Strut 10 – 15cm</b>	PBT06	Cortical segments (plates) of bone of various lengths and widths - generally femoral or tibial.
<b>Strut &gt;15cm – 19cm</b>	PBT07	
<b>Strut &gt; 20cm</b>	PBT48	
<b>Osteotomy wedge</b>	PBT60	Section of iliac crest or proximal tibia / tibial plateau or distal femur or femoral head with three facets covered by cortical bone. <b>(Iliac wedge available upon request)</b>
<b>Iliac wedge –Tricortical</b>	PBT32	
<b>Iliac crest</b>	PBT31	Wing of ileum resected from hemipelvis.
<b>Hemipelvis –Complete</b>	PBT30	Entire hemipelvis left or right, incorporating the ileum, ischium and pubis.
<b>Hemipelvis –Acetabulum</b>	PBT29	The cup of the pelvis / hip joint

ITEM	REBATE CODE	DESCRIPTION
<b>Humerus–Whole</b>	PBT33	Entire humerus including humeral head and both epicondyles distally, with or without rotator cuff mechanism of the shoulder.
<b>Proximal Humerus -Without rotator cuff</b>	PBT35	Proximal segment of humerus, including humeral head transected mid shaft, with or without rotator cuff mechanism of shoulder.
<b>Proximal Humerus -With rotator cuff</b>	PBT34	Proximal segment of humerus, including humeral head transected mid shaft, with rotator cuff mechanism of shoulder.

PBT33 Whole Humerus





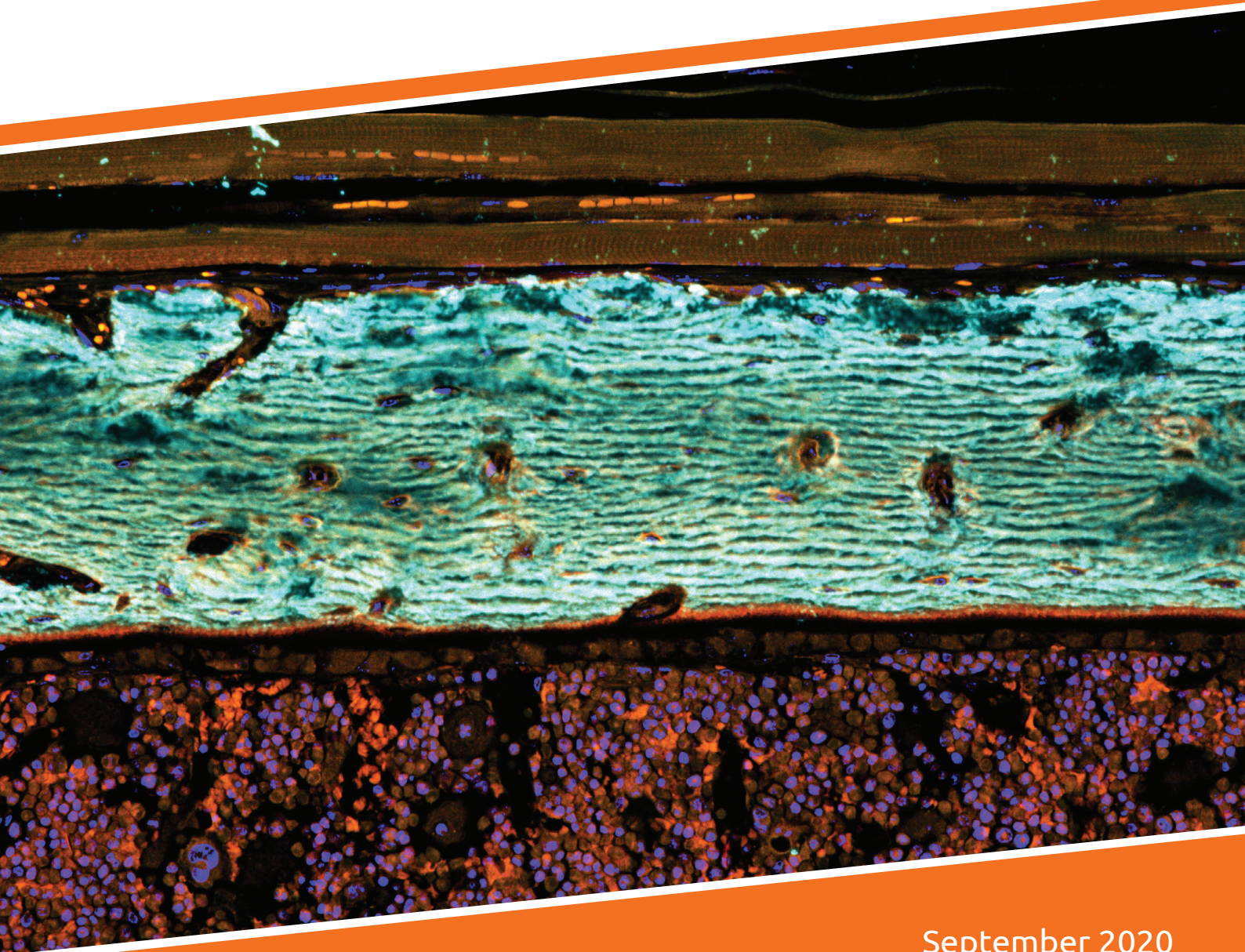
## Notes

Enhancing Lives  
Because of You



PERTH BONE &  
TISSUE BANK INC.

For all enquiries please contact our partner:



September 2020